



International Journal of Remote Sensing and Earth Sciences

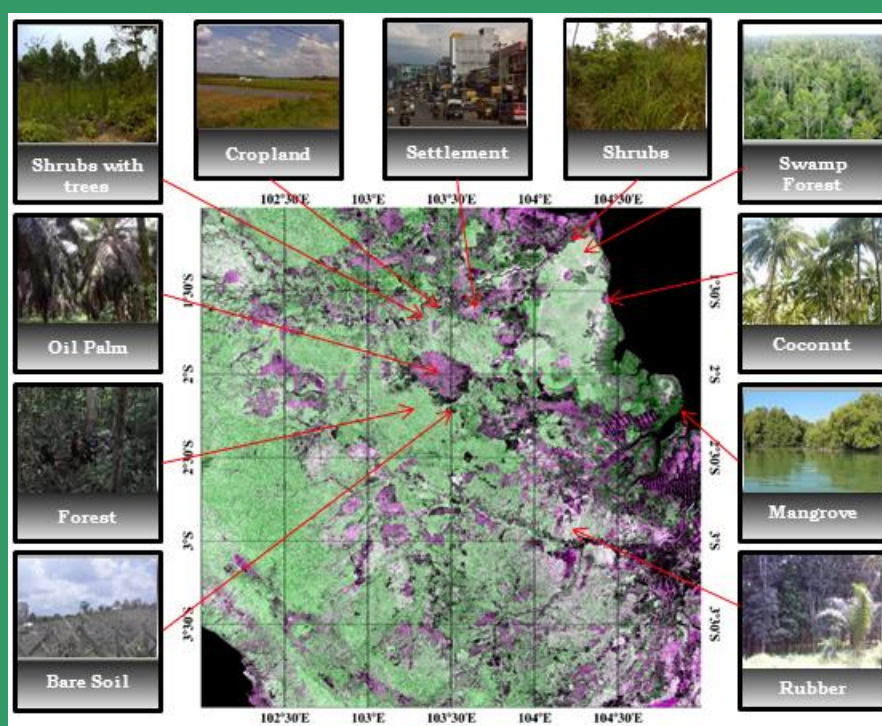


Figure. ALOS PALSAR 25m mosaic data the part of Jambi and South Sumatra Province and ground survey information

Vol. 10 No. 1 June 2013

ISSN 0216-6739
No. 371/AU1/P2MBI/07/2011

International Journal of
**Remote
Sensing and
Earth Sciences**

Published by
National Institute of Aeronautics and Space of Indonesia
(LAPAN)

Editorial Committee Preface

Dear Readers,

Welcome to the International Journal of Remote Sensing and Earth Sciences Vol. 10 No 1, June 2013. This journal is expected to enrich the serial publications on earth sciences, in general, and remote sensing in particular, not only in Indonesia and Asian countries, but also worldwide.

The contents of this journal are particular interest to remote sensing as the main data for geosciences, oceanography, marine biology, fisheries, meteorology, etc. Inside this tenth edition, there are varieties of topics discussed, including inherent optical properties from MERIS, land cover classification of ALOS PALSAR data, paddy field quick mapping, fishpond aquaculture inventory, Growth rate and productivity dynamics of *enhalus acoroides*, land moisture estimation model, forest and non forest multitemporal classification, and forest mapping.

This journal is intended, among others, to complement information on Remote Sensing and Earth Sciences, and also encourage young scientists in Indonesia and Asian countries to contribute their research results. Therefore, we would like to invite scientists to manifest their ideas through scientific research papers. We are looking forward to receiving your manuscripts for the next edition of this journal.

Editor-in-Chief,

Dr. Bidawi Hasyim

Editorial Committee Members
INTERNATIONAL JOURNAL OF
REMOTE SENSING AND EARTH SCIENCES
Vol. 10 No. 1 June 2013
ISSN 0216-6739

Editor-in-Chief : **Dr. Bidawi Hasyim**
Co Editor-in-Chief : **Mrs. Ratih Dewanti**
Editors : **Dr. Bisman Nababan**
Dr. Katmoko Ari Sambodo

Peer Reveiwrs : **Dr. Jonson Lumban-Gaol**
Dr. Domu Simbolon
Dr. Dony Kushardono
Dr. Baba Barus
Dr. Bambang Trisakti
Dr. Vincentius Siregar

Secretariat : **Mr. Agus Hidayat**
Mr. Jasyanto
Mr. Adhi Pratomo
Mrs. Yenni Vetrta
Ms. Junita Monika Pasaribu
Mr. Yudho Dewanto
Mr. M. Luthfi

Contribution Paper to:

IJReSES Secretariat
Remote Sensing Technology and Data Center
National Institute of Aeronautics and Space of Indonesia (LAPAN)
Jl. Lapan No. 70, Pekayon, Pasar Rebo, JAKARTA 13710, INDONESIA
Telp. (+62-21) 8710786 Fax. (+62 21) 8717715
ijreses@lapan.go.id



Published by:
National Institute of Aeronautics and Space of Indonesia (LAPAN)

**INTERNATIONAL JOURNAL OF
REMOTE SENSING AND EARTH SCIENCES
Vol. 10 No. 1 June 2013
ISSN 0216-6739
No. 371/AU1/P2MBI/07/2011**

Contents

Editorial Committee Preface	ii
Editorial Committee Members	iii
Deriving inherent optical properties from MERIS imagery and in situ measurement using Quasi-analitical-algorithm Wiwini Ambarwulan, Widiatmaka and Syarif Budhiman	1
Land cover classification of ALOS PALSAR data using support vector machine Katmoko Ari Sambodo and Novie Indriasari	9
Multitemporal vegetation index of Landsat image analysis for paddy field quick mapping (rice crop), case study of Tanggamus, Lampung I Made Parsa and Dede Dirgahayu Domiri	19
Fishpond aquaculture inventory in Maros Regency of South Sulawesi Province Yenni Marini, Emiyati, Teguh Prayogo, Rossi Hamzah and Bidawi Hasyim	25
Growth rate and productivity dynamics of <i>enhalus acoroides</i> leaves at the seagrass ecosystem in Pari Islands based on in situ and ALOS satellite data Agustin Rustam, Dietriech Geoffrey Bengen, Zainal Arifin, Jonson Lumban Gaol and Risti Endriani Arhatin	37
Development of land moisture estimation model by using MODIS reflectance, EVI, and thermal data to detect drought at paddy field Dede Dirgahayu Domiri	47
Determination of stratification boundary for forest and non forest multitemporal classification to support REDD+ in Sumatera Island Tatik Kartika, Inggit Lolita Sari and Bambang Trisakti	55
Utilization of multi temporal SAR data for forest mapping model development Bambang Trisakti and Rossi Hamzah	65
Instruction for Authors	75

Published by:
National Institute of Aeronautics and Space of Indonesia (LAPAN)