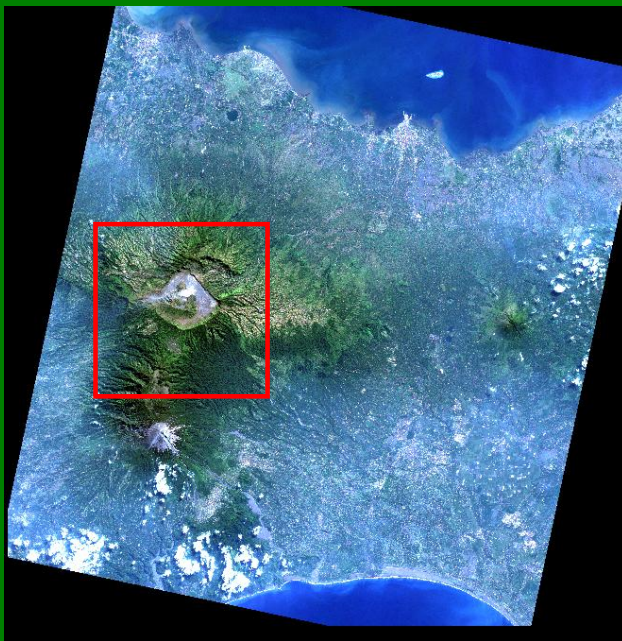




# International Journal of Remote Sensing and Earth Sciences



Vol. 9 No. 1 June 2012

ISSN 0216-6739  
No. 371/AU1/P2MBI/07/2011

International Journal of  
**Remote  
Sensing and  
Earth Sciences**

Published by  
National Institute of Aeronautics and Space of Indonesia  
LAPAN

## **Editorial Committee Preface**

Dear Readers,

Welcome to the International Journal of Remote Sensing and Earth Sciences Vol. 9 No. 1, June 2012. This journal is expected to enrich the serial publications on earth sciences, in general, and remote sensing in particular, not only in Indonesia, but also in Asian countries.

The contents of this journal are particular interest to remote sensing as the main data for geosciences, oceanography, marine biology, fisheries, meteorology, etc. Inside this ninth edition, there are varieties of topics discussed, including land cover classification, vegetation index for rain forest, artificial neural network, radiometric performance, orthorectification, and red tide detection.

This journal is intended, among others, to complement information on Remote Sensing and Earth Sciences, and also encourage young scientists in Indonesia and Asian countries to contribute their research results. Therefore, we would like to invite young scientists to manifest their ideas through scientific research papers. We are looking forward to receiving your manuscripts for the next edition of this journal.

Editor-in-Chief,

**Dr. Bidawi Hasyim**

**Editorial Committee Members**  
**INTERNATIONAL JOURNAL OF**  
**REMOTE SENSING AND EARTH SCIENCES**  
**Vol. 9 No. 1 June 2012**  
**ISSN 0216-6739**

- Editor-in-Chief** : **Dr. Bidawi Hasyim**  
**Co Editor-in-Chief** : **Mrs. Ratih Dewanti**  
**Editors:** : **Dr. Bisman Nababan**  
                  : **Dr. Katmoko Ari Sambodo**
- Peer Reviewers** : **Dr. Jonson Lumban-Gaol**  
                      : **Dr. Domu Simbolon**  
                      : **Dr. Dony Kushardono**  
                      : **Dr. Baba Barus**  
                      : **Dr. Bambang Trisakti**  
                      : **Dr. Vincentius Siregar**
- Secretariat** : **Mr. Agus Hidayat**  
                  : **Mr. Jasyanto**  
                  : **Mr. Adhi Pratomo**  
                  : **Ms. Yenni Vetrta**  
                  : **Ms. Junita Monika Pasaribu**  
                  : **Mr. Yudho Dewanto**  
                  : **Mr. M. Luthfi**

**Contribution Paper to :**

**IJReSES Secretariat**  
**National Institute of Aeronautics and Space of Indonesia (LAPAN)**  
Jl. Pemuda Persil No.1, Rawamangun, Jakarta 13220 INDONESIA  
Phone. (+62 21) 4892802 Fax. (+62 21) 47882726  
ijreses@lapan.go.id



Published by:  
**National Institute of Aeronautics and Space of Indonesia**  
**(LAPAN)**

## Contents

Editorial Committee Preface.....	iii
Editorial Committee Members.....	iv
Combination of Speckle Divergence and Neighborhood Analysis to Classify Settlement from TerraSAR-X Data M. Rokhis Khomarudin and Agung Indrajit .....	1
Land Cover Classification of Alos Avnir Data using Ikonos as Reference Bambang Trisakti dan Dini Oktavia Ambarwati .....	13
Comparison of the Vegetation Indices to Detect the Tripocal Rain Forest Changes using Breaks for Additive Seasonal and Trend (BFAST) Model Yahya Darmawan and Parwati Sofan .....	21
Identifying Patterns of Satellite Imagery using an Artificial Neural Network Iskhaq Iskandar, Azhar K. Affandi, Dedi Setiabudidaya, Muhammad Irfan, Wijaya Mardiansyah and Fadli Syamsudin .....	35
Estimation of Radiometric Performance of Electro-Optical Imaging Sensor of Low Earth Equatorial Orbit LAPAN Satellite Ahmad Maryanto, Andy Indradjad, Dinari Nikken Sulastrie Sirin, and Ayom Widipaminto.....	41
Red Tide Detection using SeaWiFS Standard Chlorophyll-a Algorithm in Southeast Korean Waters SeaWiFS Gathot Winarso .....	53
Orthorectification of Spot-4 using Rational Polynomial Coefficients Danang Surya Candra .....	63
Instruction for Authors .....	68

---

---