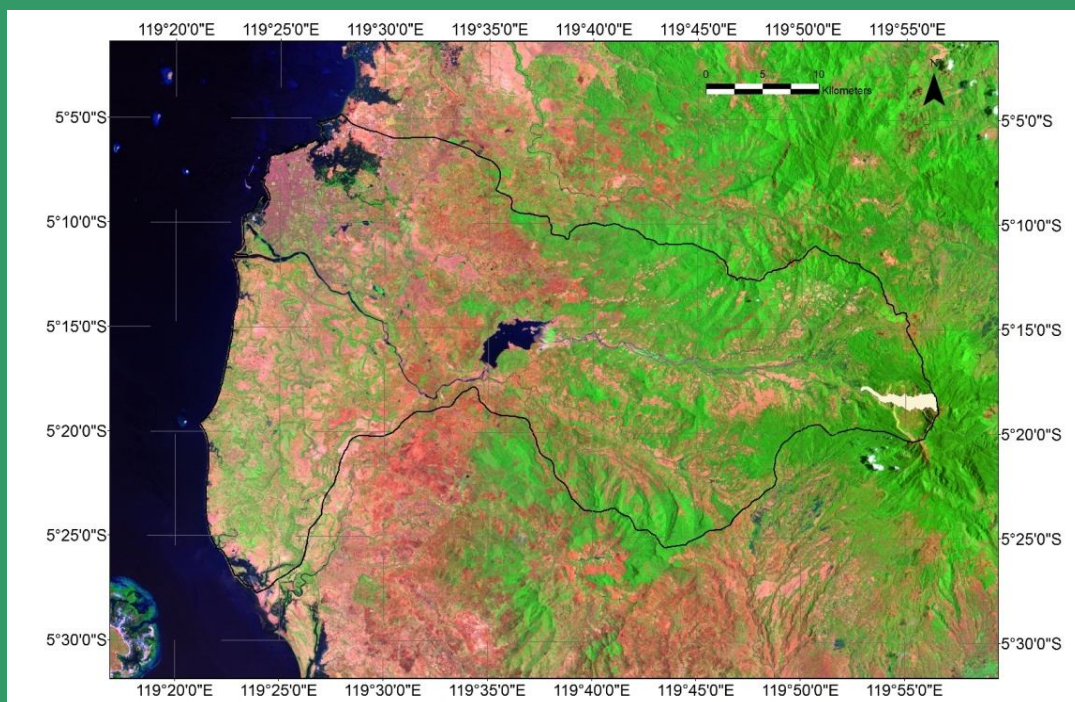




International Journal of Remote Sensing and Earth Sciences



Editorial Committee Preface

Dear Readers,

Welcome to the sixth issue of the International Journal of Remote Sensing and Earth Sciences. This journal is expected to enrich the serial publications on earth sciences, in general, and remote sensing in particular, not only in Indonesia, but also in Asia countries.

The contents of this journal are particular interest to remote sensing as the main data for geosciences, oceanography, marine biology, fisheries, meteorology, etc. Inside this sixth edition, there are varieties of topics discussed, including natural disasters, ocean color, marine culture, pelagic fish, and oceanography.

This journal is intended, among others, to complement information on Remote Sensing and Earth Sciences, and also encourage young scientists in Indonesia and Asian countries to contribute their thoughts. Therefore, we would like to invite young scientists to manifest their ideas through research papers, short reports, introduction of new products, and other materials as stated in the information to Contributions. We are looking forward to receiving your manuscripts for this journal.

Editor-in-Chief,

Dr. Orbita Roswintiarti

Editorial Committee Members
INTERNATIONAL JOURNAL OF
REMOTE SENSING AND EARTH SCIENCES
Volume 8, 2011
ISSN 0216-6739

Editor-in-Chief : **Dr. Orbita Roswintiarti**
Co Editor-in-Chief : **Dra. Ratih Dewanti, M.Sc**
Editors: : **Dr. Takahiro Osawa**
Dr. Bisman Nababan
Dr. Ivonne M. Radjawane
Dr. Jonson L. Gaol
Dr. Nining Sari Ningsih
Dr. Richardus Kaswadji
Dr. Bambang Trisakti
Prof. Bonar Pasaribu
Dr. John Pariwono
Dr. Mutiara R. Putri
Dr. Vincentius Siregar
Dr. Susanna
Dr. Ketut Wikantika

Secretariat : **Elly Kuntjahyowati**
Wawan K. Harsanugraha
Fira Marfira
Noer Laela Sari
Nanin Anggraini

Contribution Paper to:

IJReSES Secretariat
Remote Sensing Applications and Technology Development Center
Indonesian National Institute of Aeronautics and Space (LAPAN)
Jl. Lapan No. 70, Pekayon, Pasar Rebo, JAKARTA 13710, INDONESIA
Telp. (+62-21) 8710786 Fax. (+62 21) 8722773
ijreses_secretariat@yahoo.com



Published by:
International Society of Remote Sensing and Earth Sciences
(IReSES)

Contents

Editorial Committee Preface	iii
Editorial Committee Members	v
CO2 Flux in Indonesian Water Determined by Satellite Data Ni Wayan Ekayanti and Abd. Rahman as-Syakur.....	1
Analysis of Critical Land in The Musi Watershed Using Geographic Information Systems Danang Surya Candra.....	13
Trend in Precipitation Over Sumatera Under The Warming Earth Iskhaq Iskandar, Muhammad Irfan, Fadli Syamsuddin, Akmal Johan, and Pradanto Poerwono.....	19
Variability and Validation of Sea Surface Temperature Estimated by Pathfinder Algorithm of NOAA-AVHRR Satellite in The North Papua Waters Bisman Nababan, Bidawi Hasyim, and Hilda I. N. Bada.....	25
Developing Tropical Landslide Susceptibility Map Using Dinsar Technique of JERS-1SAR Data Ilham Alimuddin, Luhur Bayuaji, Haeruddin C. Maddi, Josaphat Tetuko Sri Sumantyo, and Hiroaki Kuze.....	32
DEM Generation From Stereo ALOS PRISM and Its Quality Improvement Bambang Trisakti and Atriyon Julzarika.....	41
Application of Satellite Microwave Remote Sensing Data to Simulate Migration Pattern of Albacore Tuna Mukti Zainuddin, Katsuya Saitoh, Sei-Ichi Saitoh.....	49
IReSES Statutes and Rules	57
IJReSES Information for Contributors	61
Acknowledgements.....	64
