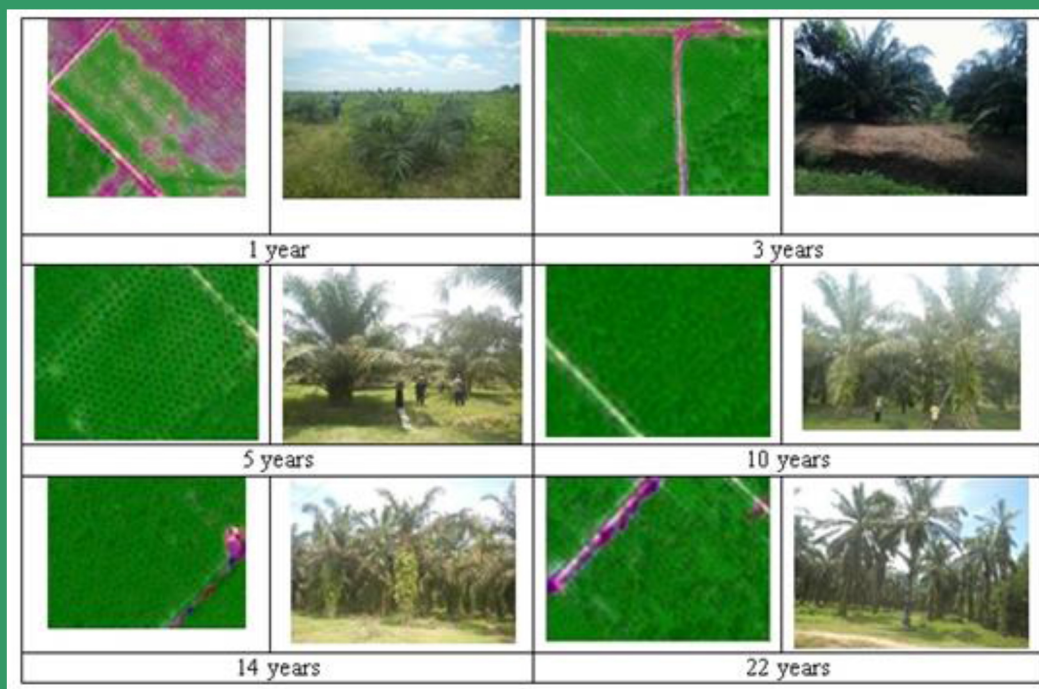




# International Journal of Remote Sensing and Earth Sciences



Vol. 12 No. 1 June 2015

ISSN 0216-6739  
No. 572/AU2/P2MI-LIPI/07/2014

International Journal of  
**Remote  
Sensing and  
Earth Sciences**

**Published by  
National Institute of Aeronautics and Space of Indonesia  
(LAPAN)**



## **Editorial Committee Preface**

Dear Readers,

Welcome to the International Journal of Remote Sensing and Earth Sciences Vol. 12 No 1, June 2015. This journal is expected to enrich the serial publications on earth sciences, in general, and remote sensing in particular, not only in Indonesia and Asian countries, but also worldwide.

The contents of this journal are particular interest to remote sensing as the main data for geosciences, oceanography, marine biology, fisheries, meteorology, etc. In this twelfth edition, various topics are discussed, including studies of oxygen concentration using Landsat data, bathymetry extraction using LANDSAT 8 satellite imagery, growth profile analysis of oil palm by using SPOT-6, effect of environmental condition changes on distribution of urban heat island, the utilization of LANDSAT 8 for mapping the surface waters temperature, detecting the affected areas of eruption using LANDSAT 8 imageries, chlorophyll-a concentrations estimation from Aqua-MODIS and NPP VIIRS, and parameter monitoring of lake ecosystem status using Landsat data.

This journal is intended, among others, to complement information on Remote Sensing and Earth Sciences, and also encourage young scientists in Indonesia and Asian countries to contribute their research results. Therefore, we would like to invite scientists to manifest their ideas through scientific research papers. We are looking forward to receiving your manuscripts for the next edition of this journal.

Editor-in-Chief,

**Dr. M. Rokhis Khomarudin**

**Editorial Committee Members**  
**INTERNATIONAL JOURNAL OF**  
**REMOTE SENSING AND EARTH SCIENCES**  
**Vol. 12 No. 1 June 2015**  
**ISSN 0216-6739**

- Editor-in-Chief : **Dr. M. Rokhis Khomarudin**  
Co Editor-in-Chief : **Dr. Erna Sri Adiningsih**  
Editors : **Dr. Ratih Dewanti**  
**Dr. Bambang Trisakti**  
**Dr. Syarif Budhiman**  
Peer Reveiwers **Prof. Dr. Domu Simbolon**  
**Prof. Dr. Ir. I Nengah Surati Jaya, M.Agr**  
**Prof. Aris Poniman**  
**Prof. Dr. Dewayani Sutrisno**  
**Dr. Bidawi Hasyim**  
**Dr. Ir. Baba Barus, M.Sc**  
**Dr. Ing. Widodo Setyo Pranowo**  
**Dr. Jonson Lumban Gaol**
- Secretariat : **Mr. Christianus R. Dewanto**  
**Mr. Jasyanto**  
**Ms. Mega Mardita**  
**Mr. Suwarsono**  
**Ms. Sayidah Sulma**  
**Mr. Fajar Yulianto**  
**Mr. Zylshal**  
**Mr. Yudho Dewanto**  
**Mr. M. Luthfi**  
**Mr. Irianto**

Contribution Paper to:

**IJReSES Secretariat**  
**National Institute of Aeronautics and Space of Indonesia (LAPAN)**  
Jl. Pemuda Persil No. 1, Rawamangun, Jakarta 13220, INDONESIA  
Phone. (021) 4892802 ext. 144 – 145 (Hunting) Fax. (021) 47882726  
Pukasi.lapan@gmail.com



Published by:  
**National Institute of Aeronautics and Space of Indonesia**  
**(LAPAN)**

INTERNATIONAL JOURNAL OF  
REMOTE SENSING AND EARTH SCIENCES

Vol. 12 No. 1 June 2015

ISSN 0216-6739

No. 572/AU2/P2MI-LIPI/07/2014

Contents

Editorial Committee Preface .....	ii
Editorial Committee Members .....	iii
<b>Development of Dissolved Oxygen Concentration Extraction Model Using Landsat Data (Case Study: Ringgung Coastal Waters)</b>	
Muchlisin Arief .....	1
<b>The Effect of Different Atmospheric Corrections on Bathymetry Extraction Using Landsat 8 Satellite Imagery</b>	
Kuncoro Teguh Setiawan, Yennie Marini, Johannes Manalu, and Syarif Budhiman ....	13
<b>Growth Profile Analysis of Oil Palm by Using SPOT 6 the Case of North Sumatra</b>	
Ita Carolita, J. Sitorus, Johanes Manalu, and Dhimas Wiratmoko .....	21
<b>The Effect of Environmental Condition Changes on Distribution of Urban Heat Island in Jakarta Based on Remote Sensing Data</b>	
Indah Prasasti, Suwarsono, and Nurwita Mustika Sari .....	27
<b>The Utilization of Landsat 8 for Mapping the Surface Waters Temperature of Grupuk Bay-West Nusa Tenggara: with Implications for Seaweeds Cultivation</b>	
Bidawi Hasyim, Syarif Budiman, Arlina Ratnasari, Emiyati, and Anneke K. S. Manoppo .....	41
<b>Detecting the Affected Areas of Mount Sinabung Eruption Using Landsat 8 Imageries Based on Reflectance Change</b>	
Suwarsono, Hidayat, Jalu Tejo Nugroho, Wiweka, Parwati, And M. Rokhis Khomarudin .....	49
<b>Chlorophyll-A Concentrations Estimation from Aqua-MODIS and VIIRS-NPP Satellite Sensors in South Java Sea Waters</b>	
Rayhan Nuris, Jonson Lumban Gaol, and Teguh Prayogo .....	63
<b>Monitoring of Lake Ecosystem Status Using Landsat Data (a Case Study: Lake Rawa Pening)</b>	
Bambang Trisakti, Nana Suwargana, and Joko Santo Cahyono .....	71
Instruction for Authors .....	82

