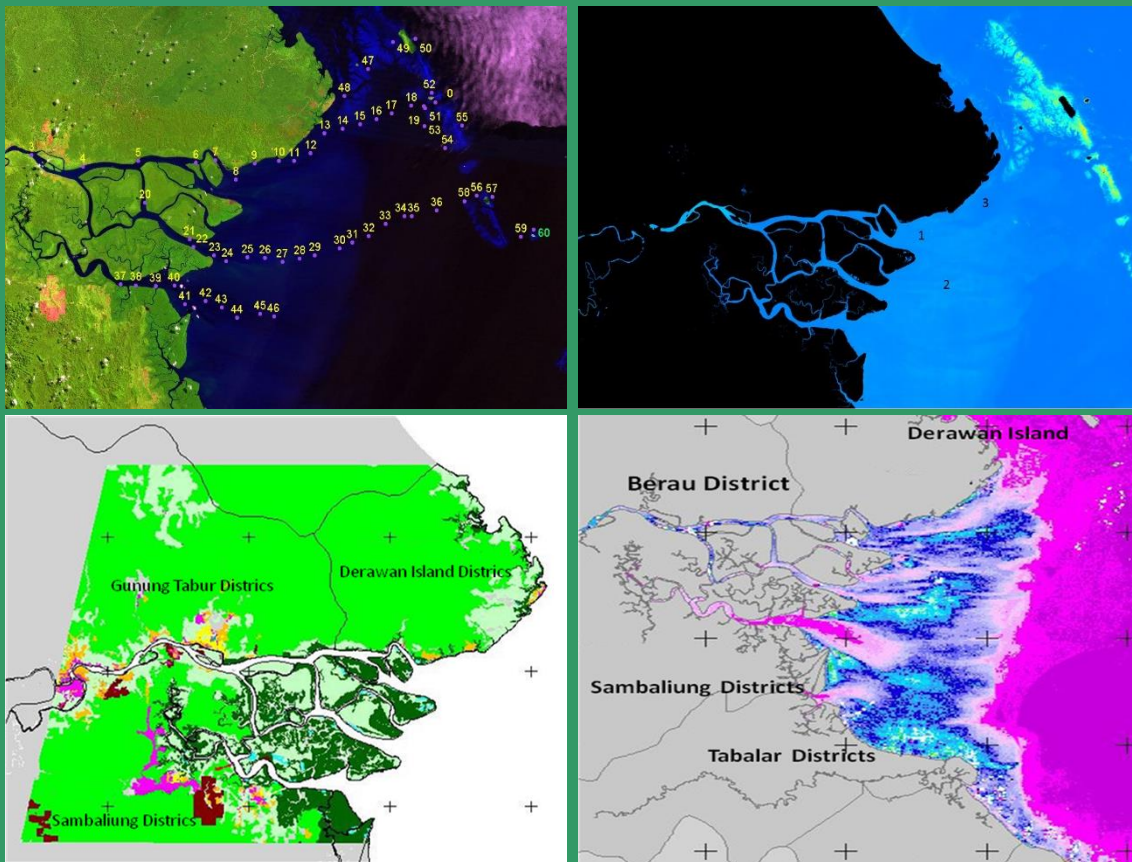




International Journal of Remote Sensing and Earth Sciences



Vol. 14 No. 1 June 2017

P-ISSN 0216-6739; E-ISSN 2549-516X
No. 572/AU2/P2MI-LIPI/07/2014

International Journal of
**Remote
Sensing and
Earth Sciences**

Published by
National Institute of Aeronautics and Space of Indonesia
(LAPAN)

Editorial Committee Preface

Dear IJReSES Readers,

We sincerely thank you for reading the International Journal of Remote Sensing and Earth Sciences Vol. 14 No 1, June 2017. In general, this journal is expected to enrich the serial publications on earth sciences. In particular this journal is to improve the remote sensing studies. Also, this journal serves as the enrichment on earth sciences publication not only in Indonesia and Asia but also worldwide.

This journal consists of papers discussing the particular interest in remote sensing field. Those papers are having remote sensing data for geosciences, oceanography, marine biology, fisheries, meteorology, etc. A variety of topics are discussed in this fourteenth edition. Briefly, the topics discussed in this edition are studies of remote sensing data processing issues such as partial acquisition technique of SAR system, land use/land cover classification using LAPAN-A2 microsatellite data, and simulation of direct georeferencing for geometric systematic correction on LSA pushbroom imager. Meanwhile the topics on remote sensing applications and validation are also discussed such as harmful algal bloom event verification using SPOT 4 image, red tide detection using SeaWiFS-derived chlorophyll-a data, diffuse attenuation coefficient and its relationship with water constituent and depth estimation of shallow waters, analysis of total suspended solid (TSS) using Landsat data.

The publication of IJReSES is intended to supply the demands regarding the information on the Remote Sensing and Earth Sciences. This journal is also intended to motivate Indonesian scientists to submit their research results. Thus, by their submitted research results, it will contribute to the development and the strengthening in remote sensing field particularly, but not limited, in Asia. To that end, we invite scientists to play their parts in this journal by submitting their scientific research papers. We look forward to receiving your research works for the next edition of this journal.

Editor-in-Chief,

Dr M. Rokhis Khomarudin

Editorial Committee Members
INTERNATIONAL JOURNAL OF
REMOTE SENSING AND EARTH SCIENCES
Vol. 14 No. 1 June 2017
P-ISSN 0216-6739; E-ISSN 2549-516X

- Editor-in-Chief : **Dr. M. Rokhis Khomarudin**
Co Editor-in-Chief : **Prof. Dr. Erna Sri Adiningsih**
Dr. Rahmat Arief, M.Sc.
Dr. Bambang Trisakti
Peer Reviewers : **Prof. Dr. Ir. I Nengah Surati Jaya, M.Agr**
Prof. Dr. Vincentius Siregar
Mahdi Kartasasmita, Ph.D
Dr. Bidawi Hasyim
Dr. Ir. Dony Kushardono, M.Eng.
Dr. Syarif Budhiman
Dr. Ing. Widodo Setyo Pranowo
Dr. Jonson Lumban Gaol
Drs. Kustiyo, M.Si.

Secretariat : **Mr. Christianus R. Dewanto**
Mr. Jasyanto
Ms. Mega Mardita
Mr. Suwarsono
Ms. Sayidah Sulma
Ms. Fajar Yulianto
Ms. Emiyati
Mr. Zylshal
Mr. Yudho Dewanto
Mr. M. Luthfi
Mr. Irianto
Mr. Dwi Haryanto
Mr. Aulia Pradipta

Contribution Paper to:

IJReSES Secretariat

National Institute of Aeronautics and Space of Indonesia (LAPAN)
Jl. Pemuda Persil No. 1, Rawamangun, Jakarta 13220, INDONESIA
Phone. (021) 4892802 ext. 144 – 145 (Hunting) Fax. (021) 47882726
Pukasi.lapan@gmail.com; publikasi@lapan.go.id



Published by:

National Institute of Aeronautics and Space of Indonesia
(LAPAN)

INTERNATIONAL JOURNAL OF
REMOTE SENSING AND EARTH SCIENCES
Vol. 14 No. 1 June 2017
P-ISSN 0216-6739; E-ISSN 2549-516X
No. 572/AU2/P2MI-LIPI/07/2014

Contents

Editorial Committee Preface	ii
Editorial Committee Members	iii
Harmful Algal Bloom 2012 Event Verification in Lampung Bay Using Red Tide Detection on SPOT 4 Image	
Emiyati, Ety Parwati, and Syarif Budhiman	1
A Partial Acquisition Technique of SAR System Using Compressive Sampling Method	
Rahmat Arief	9
Validation of Cochlodinium Polykrikoides Red Tide Detection Using SeaWiFS-Derived Chlorophyll-A Data with NFRDI Red Tide Map in South East Korean Waters	
Gathot Winarso and Joji Ishizaka	19
A Comparison of Object-Based and Pixel-Based Approaches for Land Use/Land Cover Classification Using LAPAN-A2 Microsatellite Data	
Jalu Tejo Nugroho, Zylshal, Nurwita Mustika Sari, and Dony Kushardono	27
Verification of PISCES Dissolved Oxygen Model Using In Situ Measurement in Biak, Rote, and Tanimbar Seas, Indonesia	
Armyanda Tussadiah, Joko Subandriyo, Sari Novita, and Widodo S. Pranowo	37
In-Situ Measurement of Diffuse Attenuation Coefficient and its Relationship with Water Constituent and Depth Estimation of Shallow Waters by Remote Sensing Technique	
Budhi Agung Prasetyo, Vincentius Paulus Siregar, Syamsul Bahri Agus, and Wikanti Asriningrum	47
Time Series Analysis of Total Suspended Solid (TSS) Using Landsat Data in Berau Coastal Area, Indonesia	
Ety Parwati and Anang Dwi Purwanto	61
Simulation of Direct Georeferencing for Geometric Systematic Correction on LSA Pushbroom Imager	
Muchammad Soleh, Wismu Sunarmodo, and Ahmad Maryanto	71
Instruction for Authors	83
